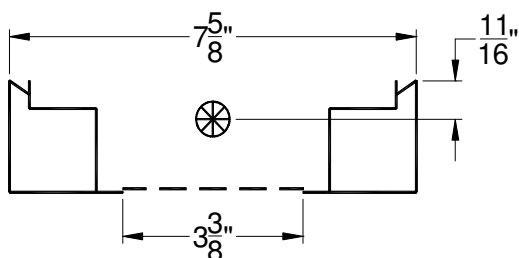
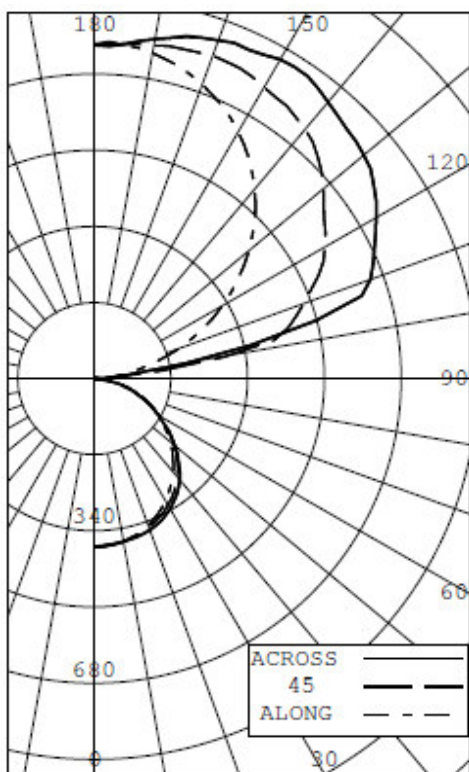




INDEPENDENT TEST LABORATORY REPORT No. 29711

FINELITE - 4 FT FLUORESCENT LUMINAIRE, CAT# S16-DCO-1T5HO-91W-OPEN
WITH WHITE INTERIOR AND WHITE FLAT PLASTIC LENS
ONE SYLVANIA 54 WATT T5 LAMP, CAT# FO54/835/HO/ECO. LUMEN RATING = 4450 LMS.
ONE SYLVANIA QHE2X54T5/UNV PSN BALLAST OPERATING AT 120 VAC AND 62.5 WATTS



INTENSITY (CANDLEPOWER) SUMMARY						OUTPUT LUMENS
ANGLE	ALONG	22.5	45	67.5	ACROSS	
0	376	376	376	376	376	
5	375	374	374	375	374	36
15	361	361	362	366	366	102
25	334	335	341	350	351	157
35	295	298	308	316	317	192
45	247	252	261	265	265	199
55	192	197	200	199	198	177
65	137	138	136	134	133	134
75	82	76	75	73	72	80
85	21	21	19	18	18	22
90	0	0	0	0	0	
95	22	98	38	29	29	78
105	133	281	445	519	509	393
115	264	397	548	647	685	511
125	390	507	623	726	757	543
135	503	590	702	763	790	522
145	599	660	744	804	824	456
155	672	705	765	802	812	347
165	723	735	763	783	791	215
175	749	746	750	750	751	73
180	745	745	745	745	745	

ZONAL LUMENS AND PERCENTAGES

ZONE	LUMENS	% LAMP	% LUMINAIRE
0-30	296	6.65	6.99
0-40	488	10.96	11.51
0-60	863	19.40	20.37
0-90	1099	24.70	25.94
40-90	611	13.74	14.43
60-90	236	5.30	5.57
90-180	3138	70.51	74.06
0-180	4237	95.20	100.00

** EFFICIENCY: 95.2% **

LUMINOUS LENGTH: 42.870 INS
WIDTH: 3.375 INS

LUMINANCE SUMMARY CD./SQ.M.

ANGLE	ALONG	45	ACROSS
45	3738	3965	4029
55	3593	3754	3714
65	3461	3449	3395
75	3404	3093	3011
85	2601	2367	2183

CERTIFIED BY:

Ryder Tunney

DATE:
OCT 19, 2011

PREPARED FOR:

FINELITE
UNION CITY, CA

TESTED IN ACCORDANCE WITH IES PROCEDURES

LIGHTING SCIENCES, INC.
7826 E. EVANS RD.
SCOTTSDALE, AZ, USA 85260

INDEPENDENT TEST LABORATORY REPORT No. 29711

FINELITE - 4 FT FLUORESCENT LUMINAIRE, CAT# S16-DCO-1T5HO-91W-OPEN
WITH WHITE INTERIOR AND WHITE FLAT PLASTIC LENS
ONE SYLVANIA 54 WATT T5 LAMP, CAT# FO54/835/HO/ECO. LUMEN RATING = 4450 LMS.
ONE SYLVANIA QHE2X54T5/UNV PSN BALLAST OPERATING AT 120 VAC AND 62.5 WATTS

INTENSITY (CANDLEPOWER) DATA

ANGLE	PLANE						OUTPUT LUMENS
	ALONG	22.5	45	67.5	ACROSS	AVERAGE	
0	376	376	376	376	376	376	
5	375	374	374	375	374	374	36
10	370	369	369	372	371	370	
15	361	361	362	366	366	363	102
20	349	350	353	359	360	354	
25	334	335	341	350	351	342	157
30	316	318	327	335	336	326	
35	295	298	308	316	317	307	192
40	272	276	286	293	294	285	
45	247	252	261	265	265	258	199
50	220	226	232	233	232	229	
55	192	197	200	199	198	198	177
60	164	167	167	165	165	166	
65	137	138	136	134	133	135	134
70	110	107	105	103	102	105	
75	82	76	75	73	72	75	80
80	51	48	46	45	44	47	
85	21	21	19	18	18	19	22
90	0	0	0	0	0	0	
95	22	98	38	29	29	47	78
100	71	220	291	223	202	218	
105	133	281	445	519	509	392	393
110	198	332	495	609	652	465	
115	264	397	548	647	685	517	511
120	328	461	591	689	721	567	
125	390	507	623	726	757	607	543
130	449	550	663	746	779	643	
135	503	590	702	763	790	676	522
140	553	627	727	788	808	705	
145	599	660	744	804	824	730	456
150	638	686	752	800	824	742	
155	672	705	765	802	812	753	347
160	700	722	767	795	805	759	
165	723	735	763	783	791	759	215
170	739	742	757	766	771	755	
175	749	746	750	750	751	749	73
180	745	745	745	745	745	745	

LIGHTING SCIENCES, INC.
7826 E. EVANS RD.
SCOTTSDALE, AZ, USA 85260

INDEPENDENT TEST LABORATORY REPORT No. 29711

FINELITE - 4 FT FLUORESCENT LUMINAIRE, CAT# S16-DCO-1T5HO-91W-OPEN
WITH WHITE INTERIOR AND WHITE FLAT PLASTIC LENS
ONE SYLVANIA 54 WATT T5 LAMP, CAT# FO54/835/HO/ECO. LUMEN RATING = 4450 LMS.
ONE SYLVANIA QHE2X54T5/UNV PSN BALLAST OPERATING AT 120 VAC AND 62.5 WATTS

AVERAGE LUMINANCE DATA

CD./SQ.M (FOOTLAMBERTS)

ANGLE	ALONG	22.5	45	67.5	ACROSS
0	4028(1175)	4028(1175)	4028(1175)	4028(1175)	4028(1175)
30	3905(1139)	3942(1150)	4052(1182)	4152(1211)	4159(1214)
40	3803(1110)	3872(1130)	4009(1170)	4110(1199)	4112(1200)
45	3738(1091)	3825(1116)	3965(1157)	4026(1175)	4029(1176)
50	3666(1070)	3777(1102)	3861(1126)	3890(1135)	3869(1129)
55	3593(1048)	3691(1077)	3754(1095)	3732(1089)	3714(1084)
60	3517(1026)	3599(1050)	3589(1047)	3549(1036)	3529(1030)
65	3461(1010)	3492(1019)	3449(1006)	3399(992)	3395(990)
70	3432(1001)	3355(979)	3285(959)	3229(942)	3205(935)
75	3404(993)	3164(923)	3093(902)	3041(887)	3011(879)
80	3163(923)	2948(860)	2866(836)	2787(813)	2728(796)
85	2601(759)	2544(742)	2367(690)	2255(658)	2183(637)

LIGHTING SCIENCES, INC.
7826 E. EVANS RD.
SCOTTSDALE, AZ, USA 85260

INDEPENDENT TEST LABORATORY REPORT No. 29711

FINELITE - 4 FT FLUORESCENT LUMINAIRE, CAT# S16-DCO-1T5HO-91W-OPEN
WITH WHITE INTERIOR AND WHITE FLAT PLASTIC LENS
ONE SYLVANIA 54 WATT T5 LAMP, CAT# FO54/835/HO/ECO. LUMEN RATING = 4450 LMS.
ONE SYLVANIA QHE2X54T5/UNV PSN BALLAST OPERATING AT 120 VAC AND 62.5 WATTS

COEFFICIENTS OF UTILIZATION

ZONAL CAVITY METHOD

EFFECTIVE FLOOR CAVITY REFLECTANCE = .20

CC	90				80				70				50				30				10				0
WALL	70	50	30	10	70	50	30	10	70	50	30	10	50	30	10	50	30	10	50	30	10	50	30	10	0
RCR																									
0	1.071	0.71	0.71	0.71	0.7	0.970	0.970	0.970	0.97	0.860	0.860	0.860	0.86	0.670	0.670	0.67	0.490	0.490	0.49	0.320	0.320	0.32	0.25		
1	0.980	0.930	0.890	0.86	0.880	0.840	0.810	0.77	0.780	0.750	0.720	0.69	0.580	0.560	0.55	0.430	0.420	0.41	0.290	0.280	0.27	0.21			
2	0.890	0.810	0.750	0.69	0.800	0.730	0.680	0.63	0.710	0.660	0.610	0.57	0.510	0.480	0.45	0.380	0.360	0.34	0.250	0.240	0.23	0.18			
3	0.810	0.710	0.640	0.58	0.730	0.650	0.580	0.53	0.650	0.580	0.520	0.48	0.450	0.410	0.38	0.330	0.310	0.29	0.230	0.210	0.20	0.15			
4	0.740	0.630	0.550	0.49	0.670	0.570	0.500	0.45	0.590	0.510	0.450	0.40	0.400	0.360	0.32	0.300	0.270	0.25	0.200	0.190	0.17	0.13			
5	0.680	0.540	0.470	0.41	0.610	0.500	0.430	0.38	0.540	0.450	0.390	0.34	0.360	0.310	0.28	0.260	0.230	0.21	0.180	0.160	0.15	0.11			
6	0.620	0.500	0.410	0.35	0.560	0.450	0.380	0.32	0.500	0.400	0.340	0.29	0.320	0.270	0.24	0.240	0.210	0.18	0.160	0.140	0.13	0.10			
7	0.570	0.440	0.360	0.30	0.520	0.400	0.330	0.28	0.460	0.360	0.300	0.25	0.280	0.240	0.21	0.210	0.180	0.16	0.150	0.130	0.11	0.08			
8	0.530	0.400	0.320	0.26	0.470	0.360	0.290	0.24	0.420	0.320	0.260	0.22	0.260	0.210	0.18	0.190	0.160	0.14	0.130	0.110	0.10	0.07			
9	0.490	0.360	0.280	0.23	0.440	0.330	0.260	0.21	0.390	0.290	0.230	0.19	0.230	0.190	0.15	0.170	0.140	0.12	0.120	0.100	0.08	0.06			
10	0.450	0.330	0.250	0.20	0.410	0.300	0.230	0.18	0.360	0.270	0.210	0.17	0.210	0.170	0.14	0.160	0.130	0.10	0.110	0.090	0.07	0.05			

LUMINAIRE INPUT WATTS 62.1

LABORATORY RESULTS MAY NOT BE REPRESENTATIVE OF FIELD PERFORMANCE.
BALLAST AND FIELD FACTORS HAVE NOT BEEN APPLIED.

TEST DISTANCE EXCEEDS FIVE TIMES THE GREATEST
LUMINOUS OPENING OF LUMINAIRE.